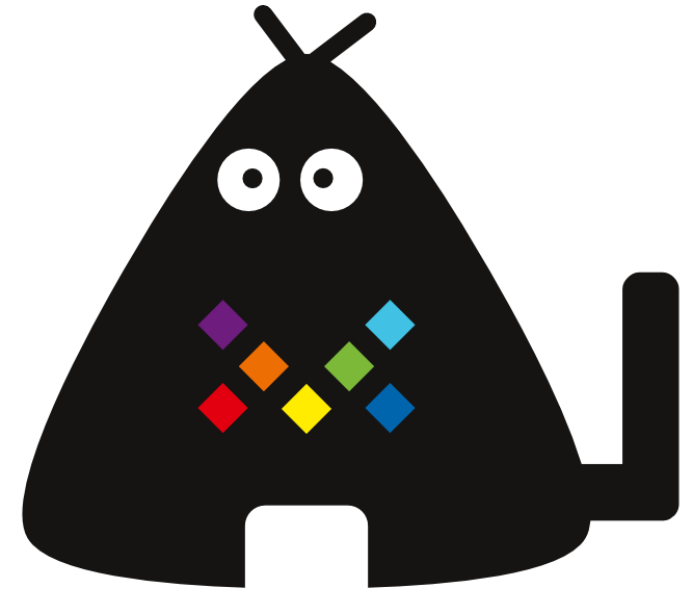


# Archiving the Moment

saveMLAK's survey  
on the impact of  
COVID-19  
for 2020-2021

Code4Lib JAPAN Conference2021  
2021-09-12

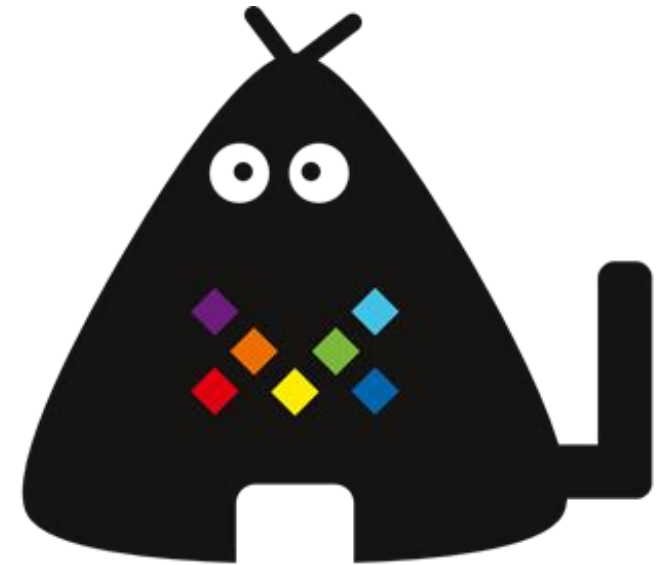
saveMLAK Covid-19 Libdata Team  
Nobue Koyasu



**saveMLAK**

# Contents

1. What is saveMLAK
2. 2020-2021 COVID-19  
Situation in Japan
3. Impact of COVID-19 on  
Library Trends Survey?
4. Results of the survey
5. Achievements and Challenges



**saveMLAK**

# What's MLAK?



Museum

Library

Archive

Kominkan\*

\*Kominkan is a unique social education facility in Japan. It has the role of a public hall and a community center. Kominkan has a library. In local council that do not have libraries, the community center library serves as the public library.

# saveMLAK is a research and release project

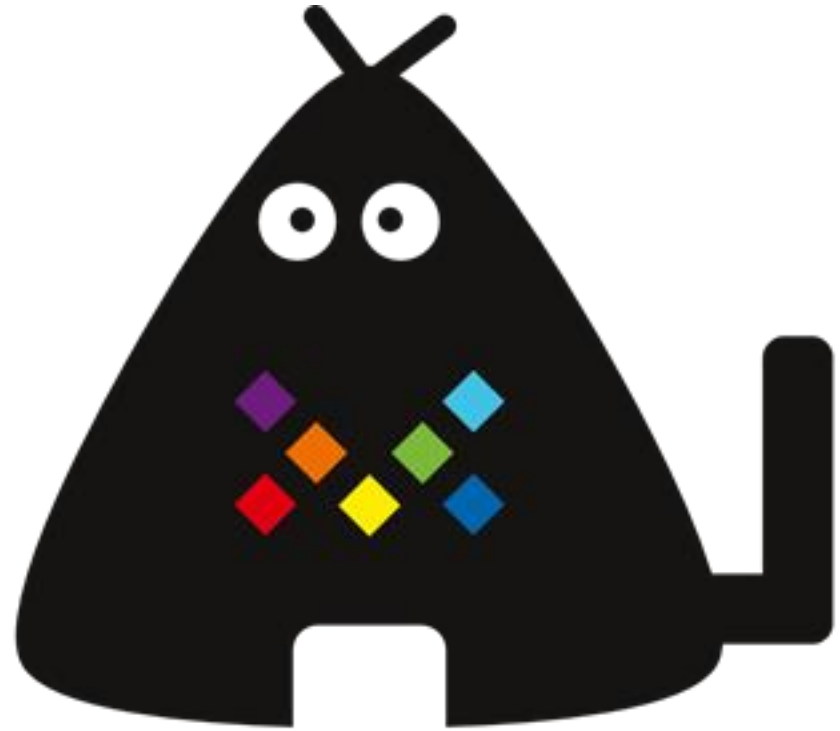


- saveMLAK was launched in the wake of the Great East Japan Earthquake.(2011.3.11)
- saveMLAK collects information on the disaster from MLAK organizations and release it on its website.
- Anyone can join at any time.
- We have build a page on media wiki, which provides status of MLAK organaization and its impact from disaster.
- For more information, please visit the website.

<https://savemlak.jp/wiki/saveMLAK>

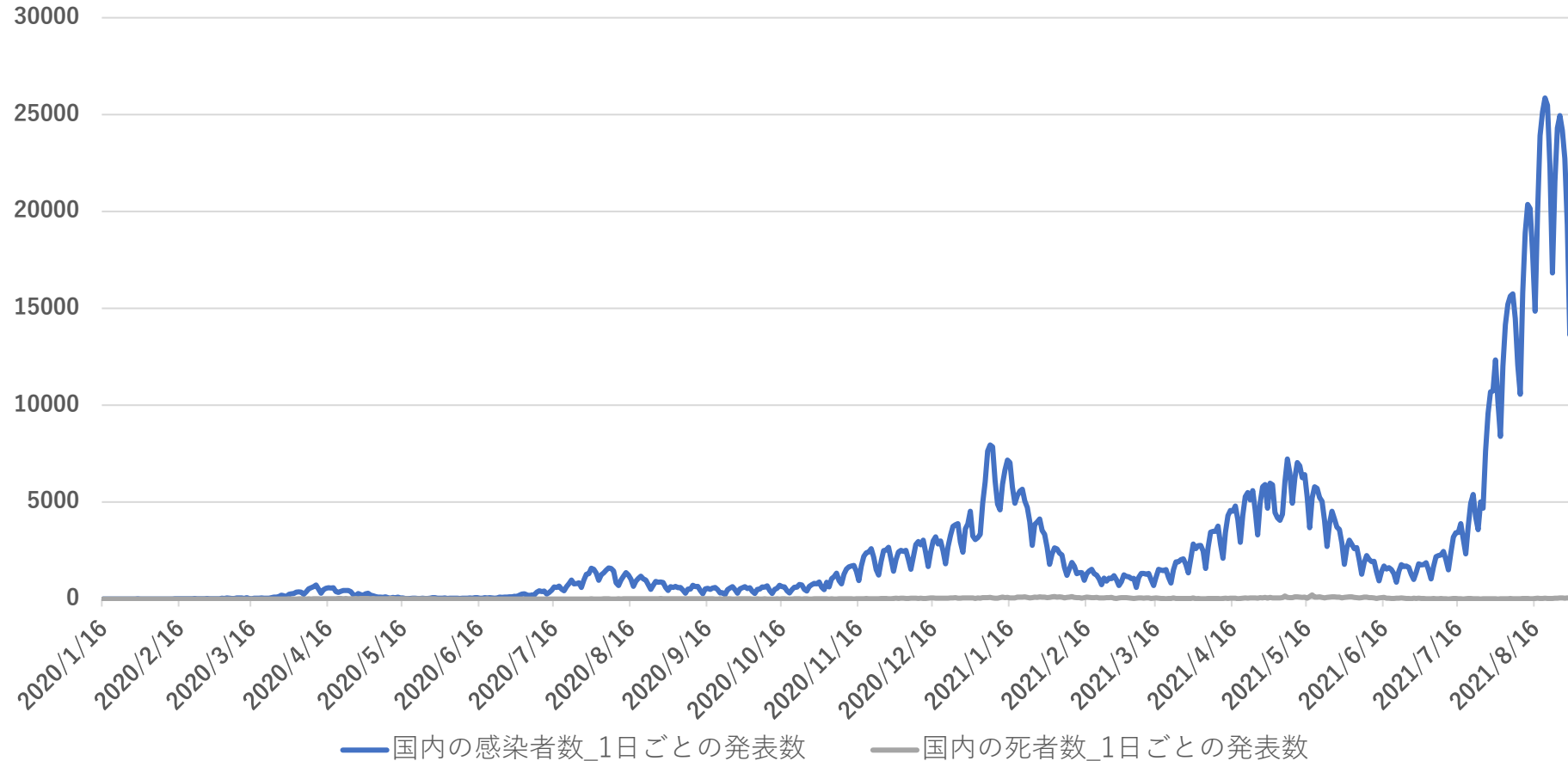
# MLAK-kun

- We have an official character named MLAK-kun.
- designed by Yukino Watanabe  
<https://kumori.info/>



**saveMLAK**

# Number of COVID-19 patients in Japan



(data) Number of infected people in Japan (NHK summary)  
<https://www3.nhk.or.jp/news/special/coronavirus/data-all/>

# Key COVID measures in Japan



- Many prefecture under “State of Emergency” or “Priority Preventative Measures”

## Specifically:

- Urging people to wear masks, wash hands, and social distancing
- School closings, and apply online classes
- Requests to close office or shorten working hours
- Request to refrain from traveling to other prefectures
- Canceling, postponing, or limiting the number of participants in events and alike.
- Request to “work from home”

# The Beginning of the Survey



- **First Survey (Initiation)**

Survey of Public Library Closures in Japan by CALIL Inc., a lib-tech company.

saveMLAK have taken over the survey from CALIL Inc. after meeting on April 12.

- **Purpose of the survey**

To take and preserve snapshot of the current situation of public libraries



# Survey Method



- Survey of trends in central libraries and reading facilities in local council across Japan
- 'Eyeballing' information on websites
- Whether the library is closed and whether users are allowed to enter the open stacks area
- Survey was conducted by "volunteers".
- Aggregate survey results in a Google spreadsheet
- Saving websites as evidence in WaybackMachine and Archive Today.
- Using Slack for information sharing, Zoom for meetings

# Survey Items



- Start date of closure
- End date of closure
- Is website available?
- Is library OPAC available?
- No of visitors record (counted separately from services since the 10th survey)
- Status of the library (started from the 10th survey, the start and end dates of closure are counted separately)
- Library services (until the 9th survey, Visitor records were also initially counted here)
- Reason for closure (added from the 10th time)

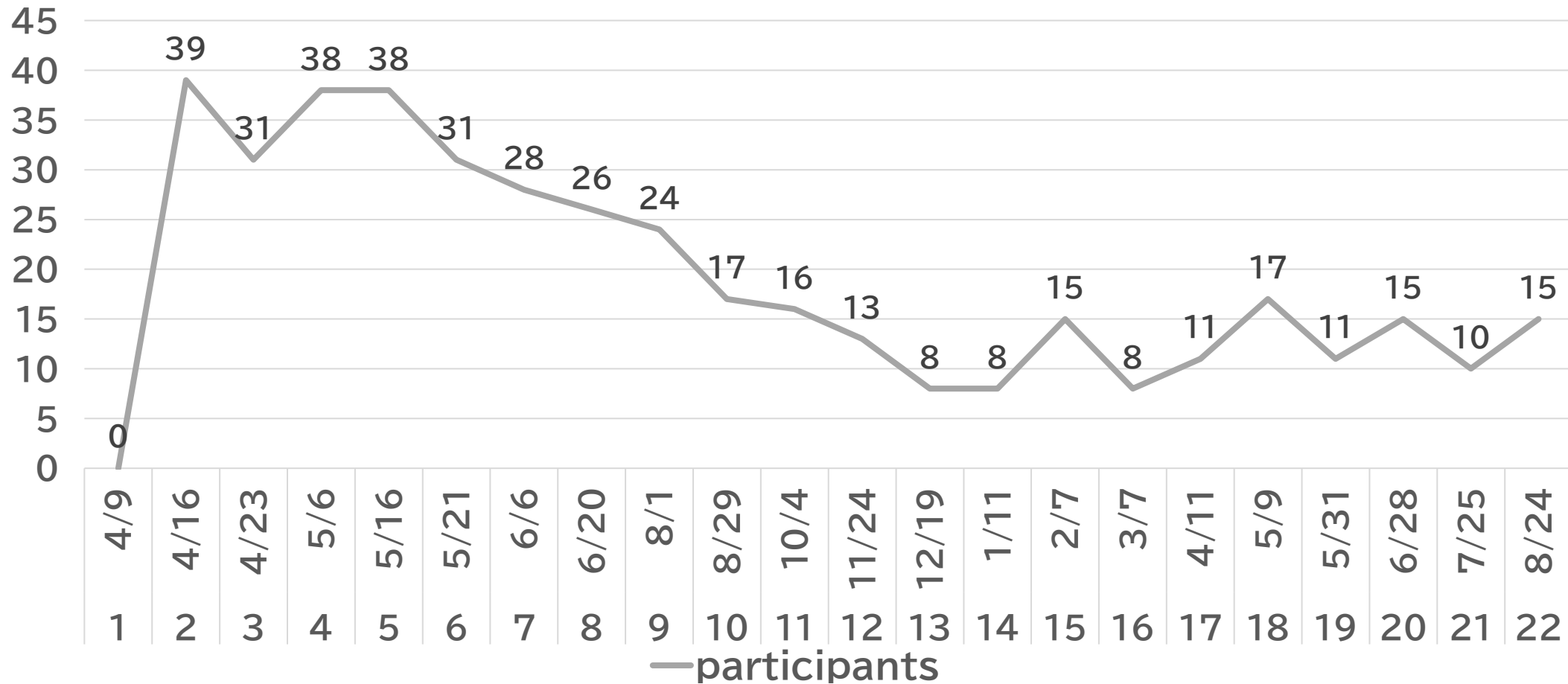
# Achievements



- From April 16, 2020 to August 24, 2021, 22 surveys were conducted
- Total number of participants: 340
- Total survey time: 785 hours

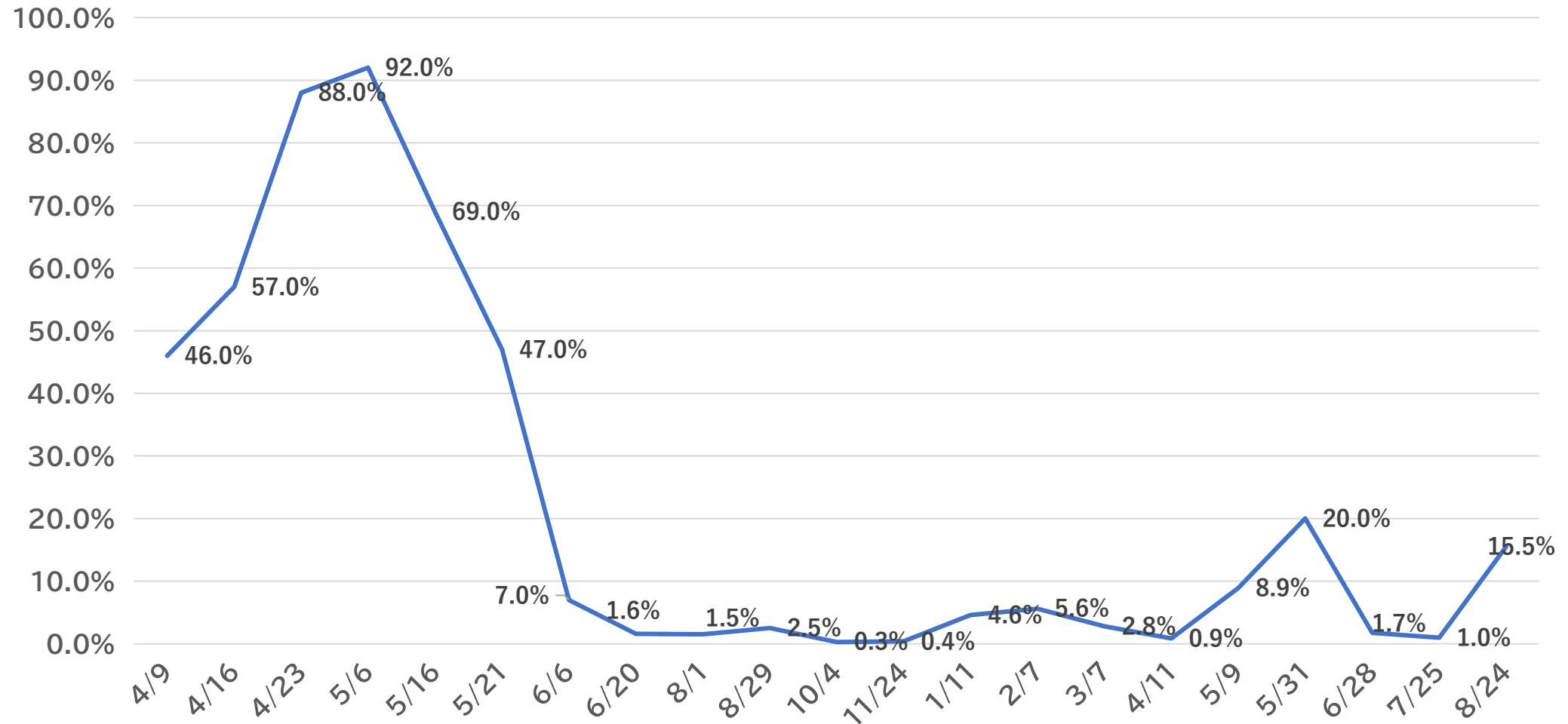
**Conducted as a quantitative and statistical survey**  
**Results provided under Creative Commons license**  
**CC0**

# Number of survey participants



# Survey results

## Trends in Library closing rates



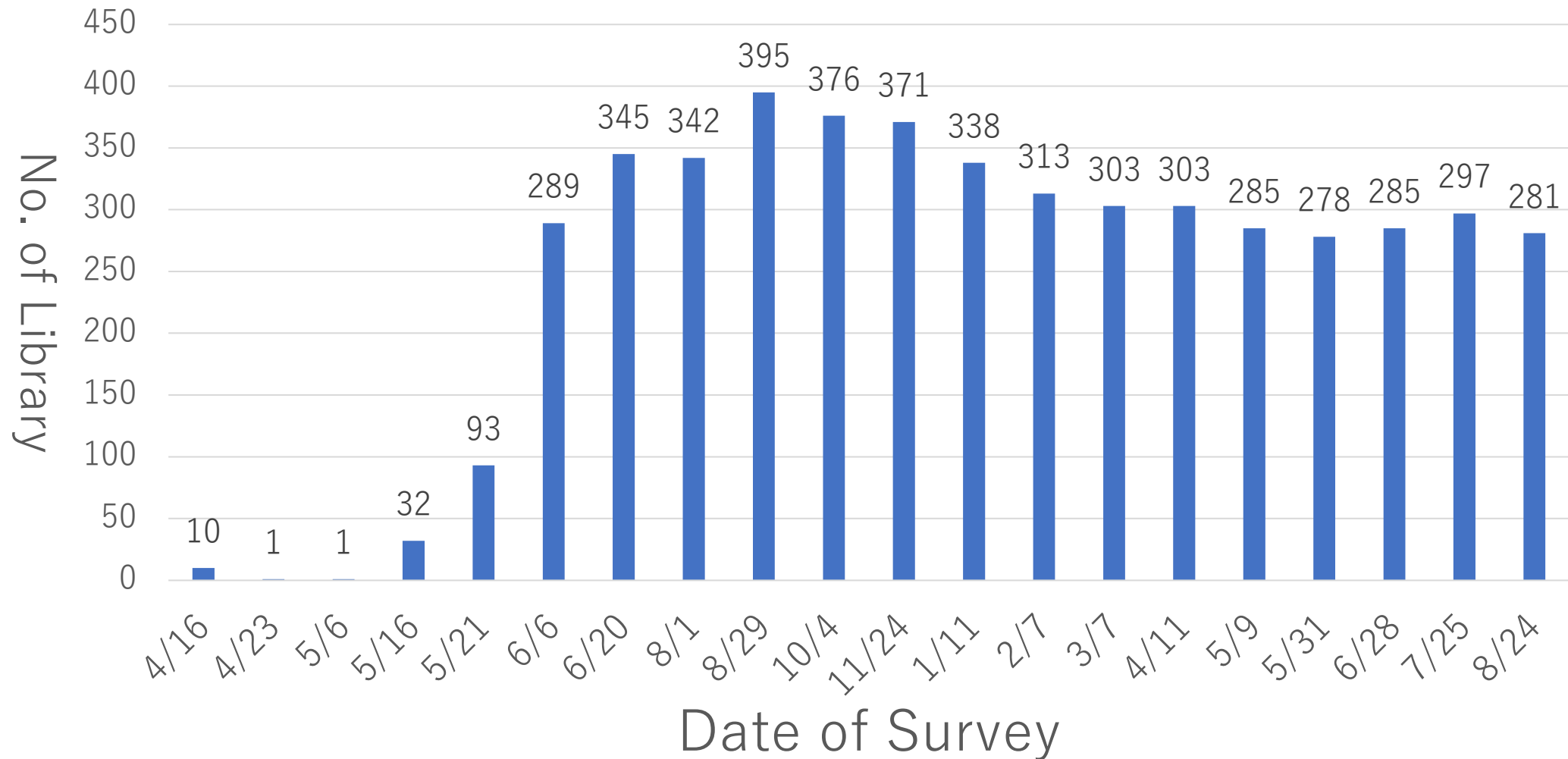
# Survey results

## Library service



# Survey results

## Visitor records



# Challenges of the survey



- What we can see is a "trend", but not a perfect one.
- Some local council do not know if libraries exist.
- Information on the website is not perfect.
  - Challenges in communicating library information
- Unique initiatives cannot be categorized and are likely not to be reflected in this survey.
  - Refer to best practice sharing and press releases
- Long survey period, results in decrease of participants



# Expanding the survey and collecting information



- **The Survey of National University Libraries**  
Comprehensive and continuous survey of 86 national university libraries from Feb/2020
  - **Survey of public university libraries**  
Exhaustive and continuous survey of 98 public university libraries from May 30, 2021
  - **Survey of special libraries**  
Special libraries that are open to the public, four times starting in July 2020
- These survey information will also be posted on the [saveMLAK website](#).**

# Summary



- The survey was an exhaustive and continuous survey of public libraries and other institutions throughout Japan.
- It served its purpose of "taking a snapshot of the moment." Its result was also referred in newspaper reports.
- The survey also provides a timeline of changes in libraries under the COVID-19 pandemic.
- Checking the archives may lead to more interesting analysis

# What is learned from this survey and archive?



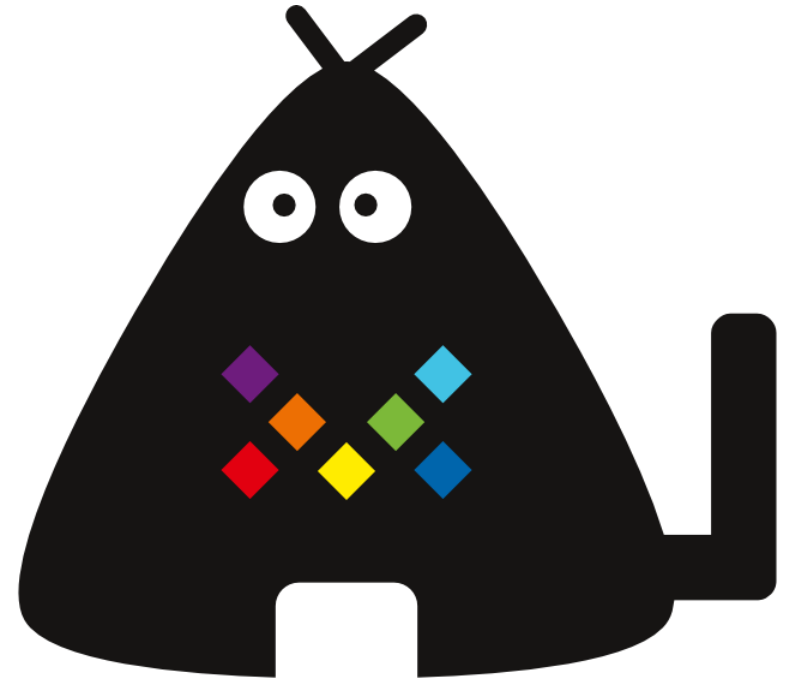
- **Convergence of Covid-19**
  - Covid-19 information disappears from Library website
- **Prepare for the next pandemic**
- **Remember Covid-19**

# Special thanks!



Thank you to the Covid-19  
Libdata team and everyone  
who is participating in the  
saveMLAK project.

Thank you  
for your  
attention.



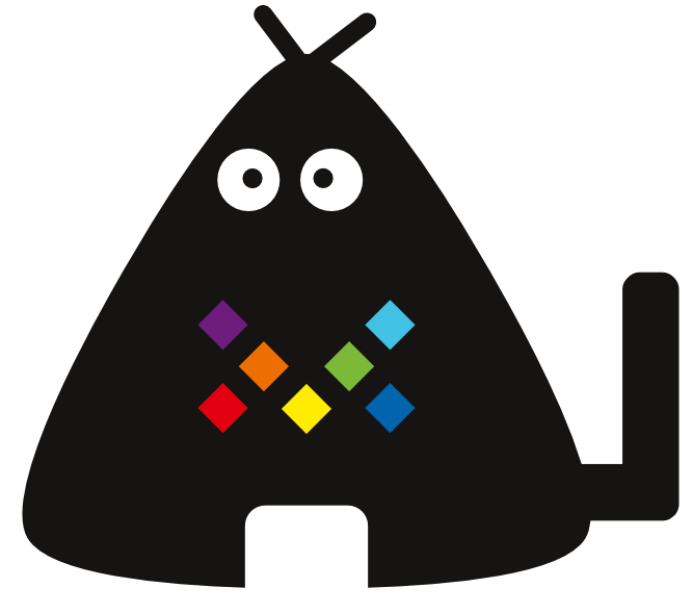
**saveMLAK**

# Archiving the Moment

SaveMLAK's  
survey on the impact  
of COVID-19 for  
2020-2021

Code4Lib JAPAN Conference2021  
2021-09-12

saveMLAK Covid-19 Libdata Team  
Nobue Koyasu



**saveMLAK**